



ESP Water Limited
Bluebird House
Mole Business Park
Leatherhead
Surrey
KT22 7BA
T: 0330 123 4201
F: 01372 377 996
Generalenquiries@esewater.co.uk
www.espug.com

15 July 2024

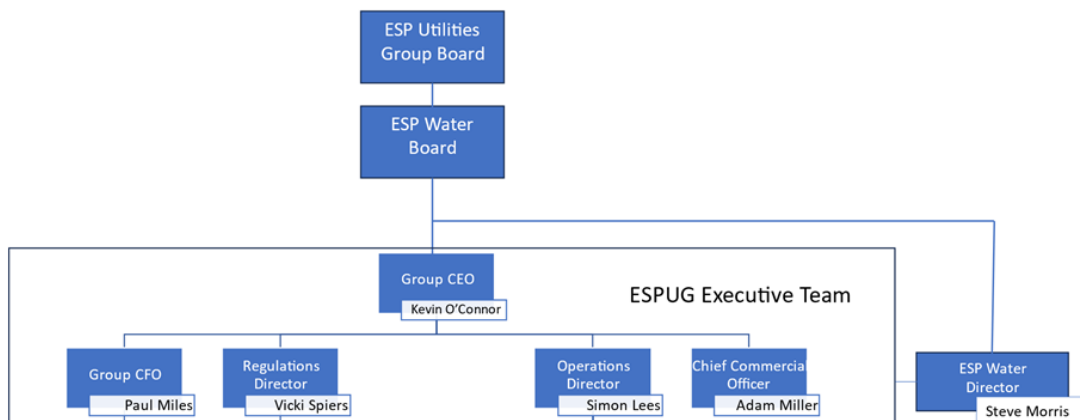
ESP Water (ESPW) Limited Annual Performance Return - Supplementary Information

Group Structure & Governance

ESP Water (ESPW) is a wholly owned subsidiary of ESP Utilities Group (ESPUG). ESPUG is a subsidiary of 3i Managed Infrastructure Acquisitions (3i MIA LP). Arbejdsmarkedets Tillaegspension (“ATP”), Stichting Depository APG Infrastructure Pool 2016 (“APG”) and 3i Group plc invest in 3i MIA LP as limited partners.

The ESPUG board provides control of ESPW through the CEO of the company.

ESPUG Executive Team - Diagram 1



The full ESPW Board typically meets four times per year and a monthly MI report is produced for the ESPUG Board by the Water Director.

The ESPW Board consists of the following Directors and non-Executive Directors:

- Anna Dellis – 3i MIA
- Yard Virdee – 3i MIA
- Kevin O'Connor – CEO ESPUG

- Paul Miles – CFO ESPUG
- Steve Morris – Water Director

Statement on Director’s Pay

As of 31 March 2024, ESPW paid no Director’s remuneration with Director’s remuneration borne by ESP Utilities Group. Also, no dividends are payable.

Statement on Accounting Policy and Methodology

The accounts have been drawn up in accordance with ‘RAG 2 – Guidelines for classification of costs across the price controls’. ESPW ensure that operating costs are split between Household and Non-Household costs and between water and wastewater services. In this reporting year we only have a few NHH properties. This is only our second reporting year as a water and sewerage undertaker, hence there are no changes to our methodology to report.

Statement of Accuracy

The board confirms that the data in the annual return is complete and accurate. There has been no third-party assurance or auditing of the report.

Approved by the Directors on 15 July 2024.
Signed on behalf of ESP Water Limited by



Stephen Morris
Director
15 July 2024